

ETH232 User Guide

The ETH232 is a single serial port server, which allows the transparent transmission of TCP or UDP data packets with an RS232/RS485 interface. The ETH232 supports usage of either the RS232 or the RS485 port, but not simultaneously. In addition, the ETH232 supports TCP Server/Client or UDP Server/Client modes.

Device Setup

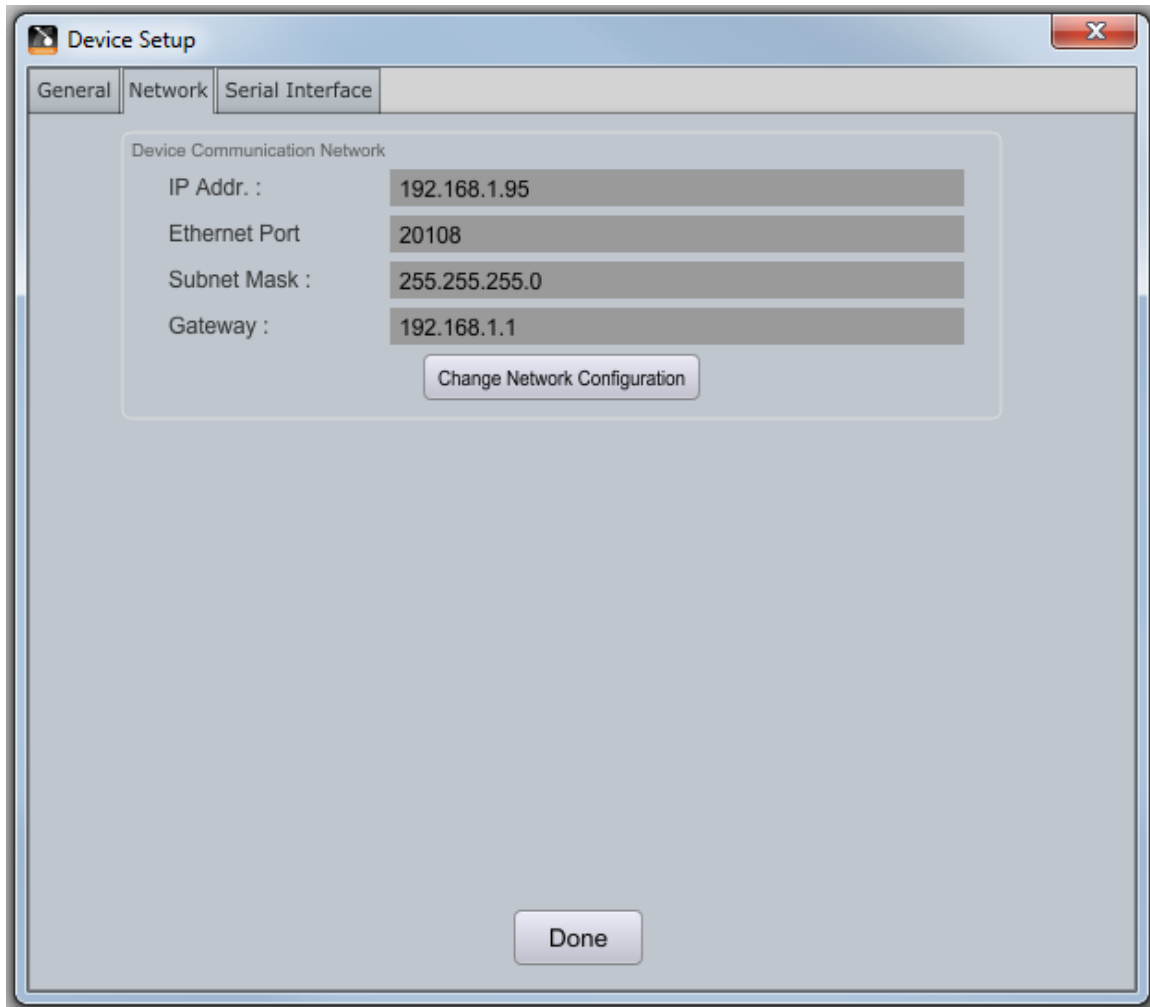
Setup is done entirely within SolaroConsole, quickly & easily as follows-

1: Connect the unit up, supplying 5VDC with the supplied adapter, Ethernet cable & the RS232/RS485 device that you wish to use for control.

2: In SolaroConsole's "Network View" you'll see the ETH232 listed-

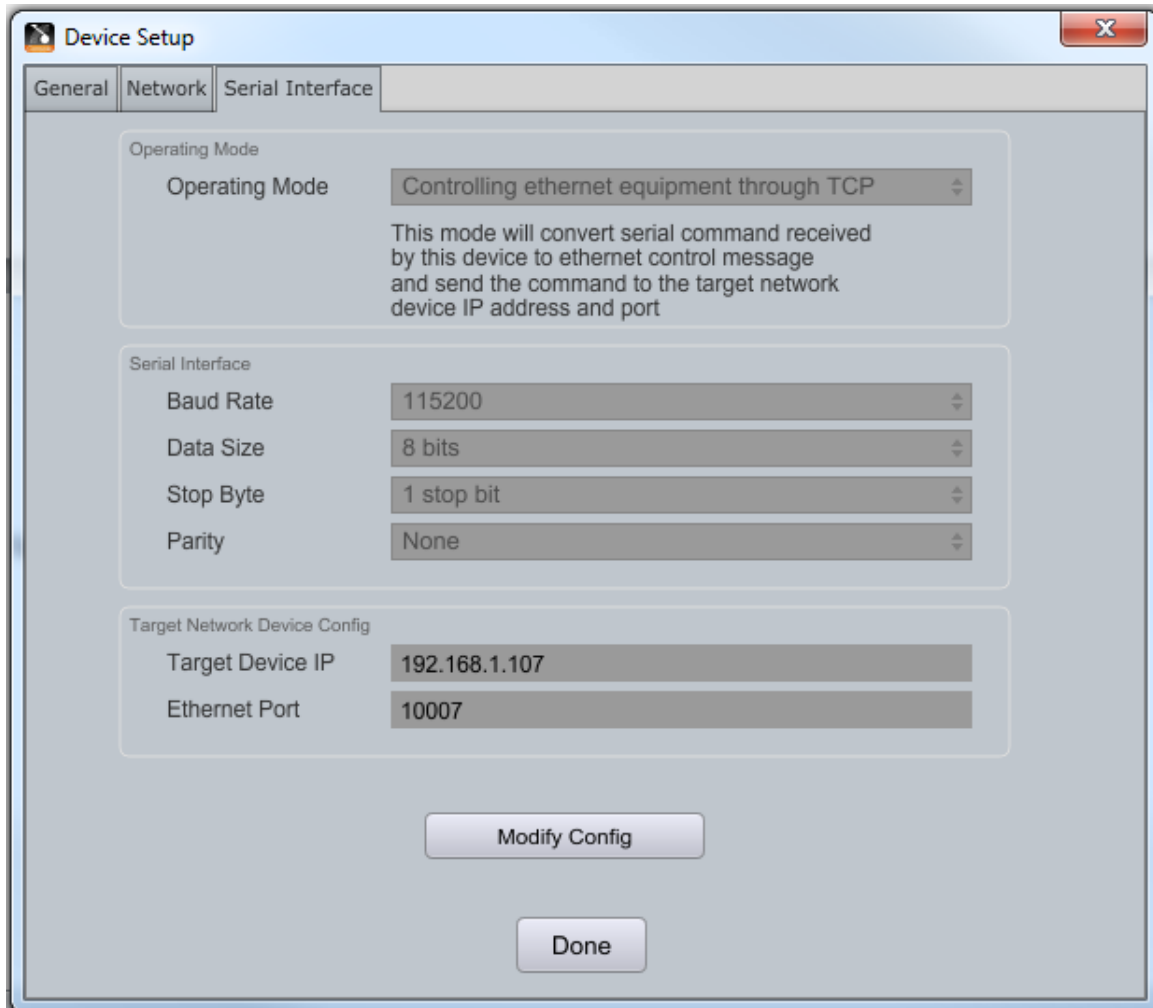


3: Right click on this & go into "Device Setup" & click on the "Network" tab



4: Click on "Change Network Configuration" and enter in a static IP address for the ETH232 & enter in the appropriate netmask & gateway for your network environment. Things will most likely not work if this is not done. You can leave the port as is. Ensure that any firewall also allows this port to pass. Save any changes made.

5: Now for the device setup. Click on the “Serial Interface” tab



This is a pretty straight forward setup, allowing a third-party controller access to a Uno at 192.168.1.107. Change the IP to the Uno/Neutrino that you wish to control. The port number for third party control of the Uno/Neutrino needs to be 10007 as listed.

For SolaroControl to act as a third party controller, change the mode to “Controlling equipment with RS232/485” In this case, when programming the buttons/faders etc in SolaroControl for your third-party serial controlled device, you would use the IP & Port as found on the Network tab as the “IP” & “Port” address of your serial third-party device. Strings sent to this IP/Port will be translated to serial data & sent on.

Click “Done”

Your device should now be able to either receive commands from a third party controller, or once programmed be able to send commands to a third-party device.

Specifications

System Info

Processor	ARM
Flash	32KB

Ethernet

Port No.	1
Port Standard	8pin RJ45
Rate	10/100Mbps, MDI/MDIX
Protect	2KV Electromagnetic Isolation
Network Protocol	IP, TCP, UDP, ARP, ICMP
Cache	Transmit:2K Byte, Receive: 1K Byte

Port

Port No.	2 (Either RS232 or RS485)
Port Standard	RS-232:DB9, RS485:2 (A+, B-)
Data Bit	5, 6, 7, 8
Stop Bit	1, 1.5, 2
Parity Bit	None, Even, Odd, Space, Mark
Baud Bit	RS-232:110 bps ~ 921.6K bps RS-485:110 bps ~ 1024K bps
Fluid Control	None
Cache	Receive:800 Bytes
Protect	RS-485: Anti-Static 2KV
RS-485 Resistance	2.2KΩ

Basic Parameters

Dimensions	6x8x2.5 cm without mount 10x8x2.5 cm with mount
Operating Temperature	-25 ~ 75°C
Storage Environment	40 ~ 85°C, 5 ~ 95% RH
Input Voltage	DC 5 ~ 9V
Working Voltage	200mA (MAX) @ 5V
Power Dissipation	<1W